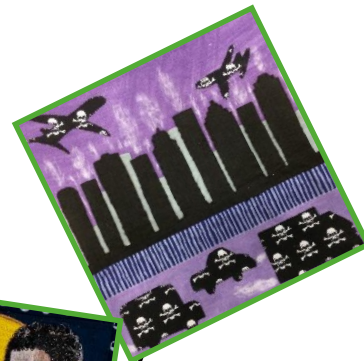
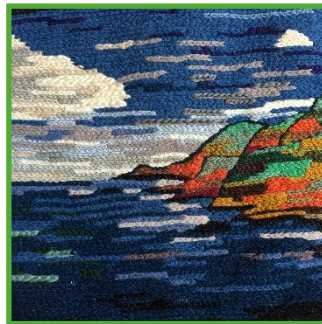


EXHIBITIONS

of textile panels from the International Collection
of the **Loving Earth Project**



Summer 2021 displays include:

Wimbledon - Centre Court shopping centre	28 June - 9 July
Bury St Edmunds - the Apex	4 July
Bainbridge, Yorkshire Dales - Quaker Meeting House	16 July - 27 July
Wendover, Buckinghamshire	17-31 July
Astley Park, Lancashire	23 July - 15 August
Edinburgh Quaker Meeting House	9 - 31 August
Riverhouse Barn Arts Centre, Walton on Thames	11 - 29 August

www.lovingearth-project.uk



@lovingearthpro1

@LovingEarthProject